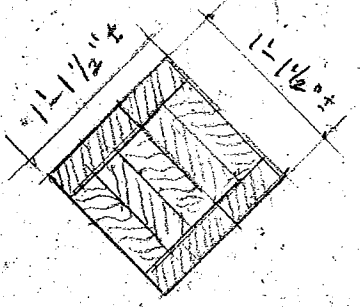
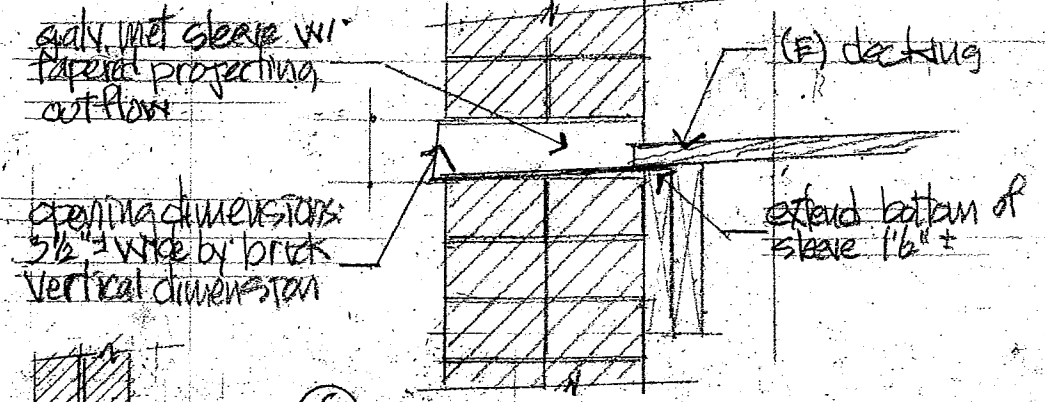




SOUTH ELEVATION 1/4"=1'-0"

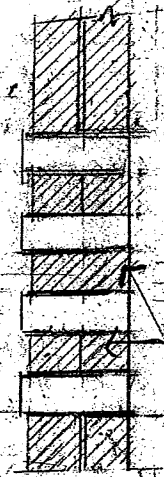


DIAGONAL BRICK FEATURE 1/2"=1'-0"

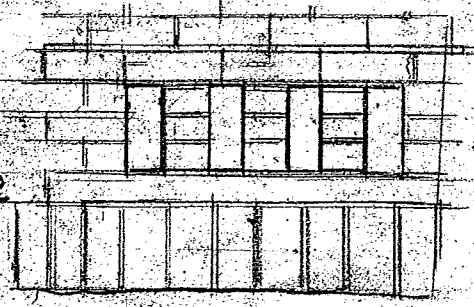


galv. met sleeve w/ flange projecting outflow
 sleeve dimensions: 5/2" wide by brick vertical dimension

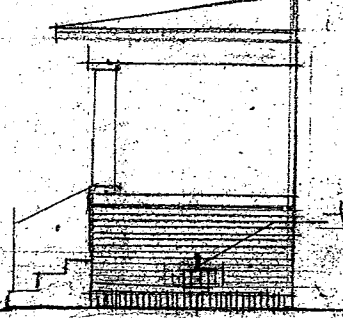
KEEP HOLE SLEEVE 1/2"=1'-0"



alternate full length of brick, alternate coursing

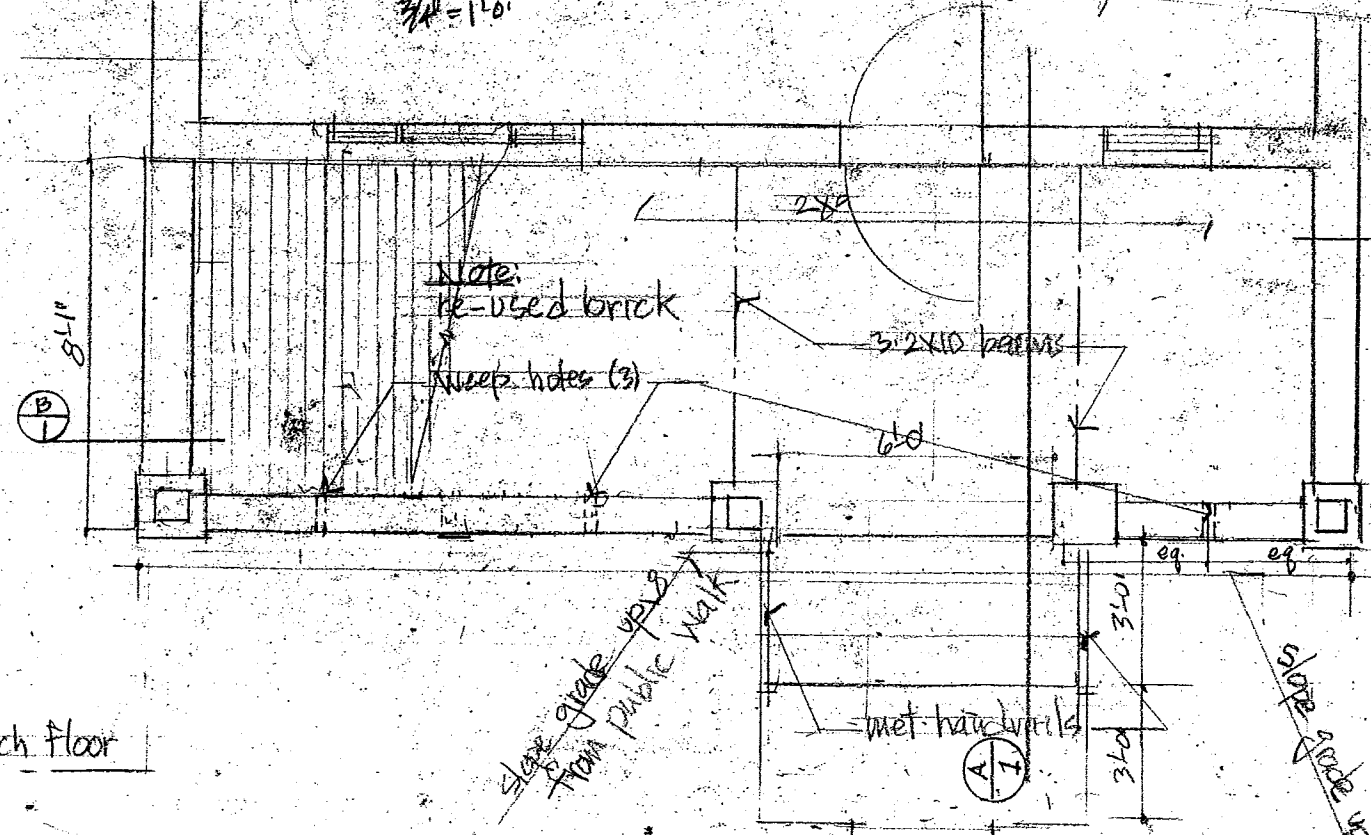


BRICK PATTERN-SECTION 3/4"=1'-0"



BRICK PATTERN-ELEV 3/4"=1'-0"

brick pattern



Note: re-used brick
 sweep holes (3)

slope grade up 3" from Public Walk

slope grade up 3"

B I

Front Porch Rebuilding
 493 Edmund
 Saint Paul, MN

Bob Roscoe
 Design for Preservation

1401 East River Parkway
 Minneapolis, Minnesota 55414
 612-317-0989

PORCH FLOOR PLAN 1/4"=1'-0"

APRIL 12, 2016

ALLEY

GARAGE

15'2 1/2"

2 story house

porch

40'0" ±

SIDEWALK

BOULEVARD

EDMUND AVE

SITE PLAN: 1/20" = 1'0"

TYPICAL PORCH WALL

3/4" = 1'0"

(E) roof & beam structure

repair (E) columns (3)
as necessary

2 wy the face brick wall
insert corner met brick ties
@ 4'et apart & every 8 courses

re-use (E) conc caps;
repair as necessary w/
silicone grout

(1x) met handrail
(2)

2-2x6 cedar treads
w/ 1x8 ft riser, 1" on
notched 2x12 carriage
boards (A)

conc walk

conc block support
8" dia foundation piers
(2) w/ bottoms @ 6" depth

2x10 pres. trfd rim joist @ all
3 walls connect to masonry
w/ 3/8" x 4" anchor bolts every
11'-4" o.c.

1x1x4-1/2" fir decking

2x8 joists @ 4'-4" o.c.

3-2x10 lam. beams (2) sloped
2" rise per joist slope, w/ 3/2" beam
packs in masonry

built out pier in masonry
wall (A)

6" conc block backup
entire wall

re-used face brick w/ black
units as soldier course
@ bottom

1/2" conc block
1'-8" x 10" conc footing w/
2 #4 rods cast in place

APRIL 12, 2016

floor level

Front Porch Rebuilding
493 Edmund
Saint Paul, MN

Bob Roscoe
Design for Preservation

1401 East River Parkway
Minneapolis, Minnesota 55414
612-317-0989

(A)

PORCH SECTION: 1/2" = 1'0"

2 of 2