



HISTORIC SAINT PAUL PRESENTS



TRIVIA NIGHT

Youth



About Historic Saint Paul

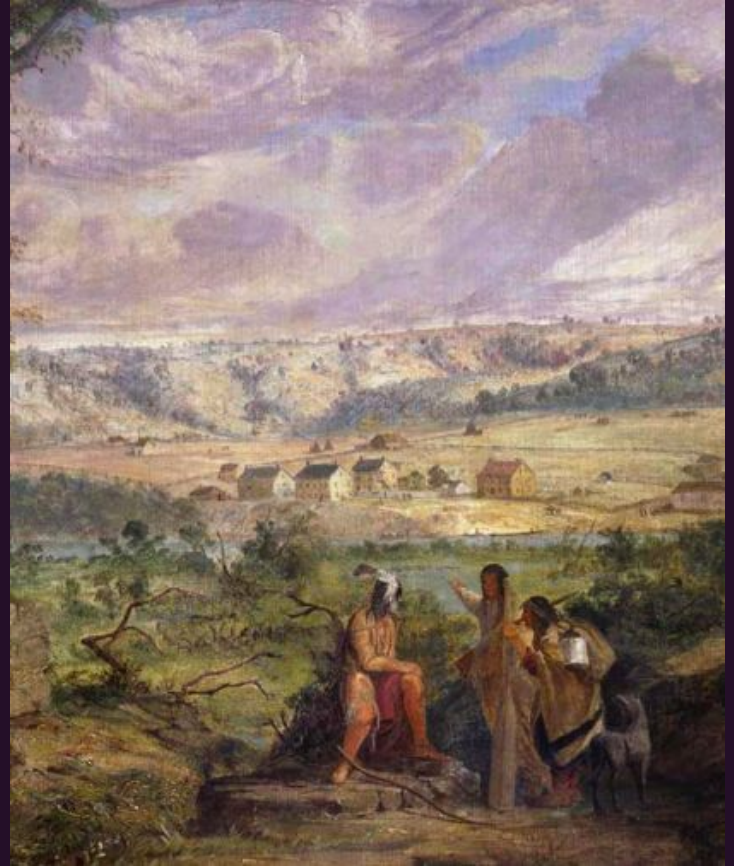
Historic Saint Paul is a nonprofit working to **strengthen Saint Paul neighborhoods by preserving and promoting their cultural heritage and character**. We have been around more than twenty years.

We work in partnership with private property owners, community organizations, and public agencies to leverage Saint Paul's cultural and historic resources as assets in economic development and community building initiatives.

Round 1

1. St. Paul is located within the traditional homelands of which group of Native American people:

- A. The Pawnee
- B. The Dakota
- C. The Navajo
- D. The Iroquois



2. Along the river it is easy to see that Saint Paul is built on layers of limestone and sandstone. In these bluffs are both natural and manmade caves. Some of the caves have names like: Carver's Cave, Stahlmann's Cellars, Fountain Cave, and Yoerg Caves. Early industry used the caves to store or grow items that we eat and drink. Can you name three items that were grown or aged in caves in Saint Paul?

Bonus points for other food or drink items that can be verified.



3. How many state capitol buildings have there been?



4. “Quadridga”, the golden horses atop the capitol holds much symbolism. Which of these is *false*?

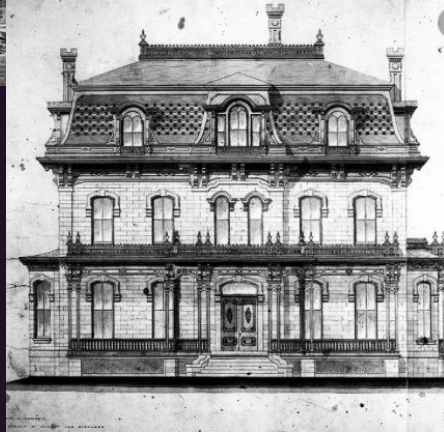
- A. The horses represent earth, wind, fire and water
- B. The bag of apples in the chariot represent apple picking/agriculture
- C. The pineapples in the chariot wheels represent hospitality
- D. The female holding the bridles represent forces of nature



5. What is the oldest known home that is still standing in St. Paul?



A. James J. Hill House



B. Alexander Ramsey House



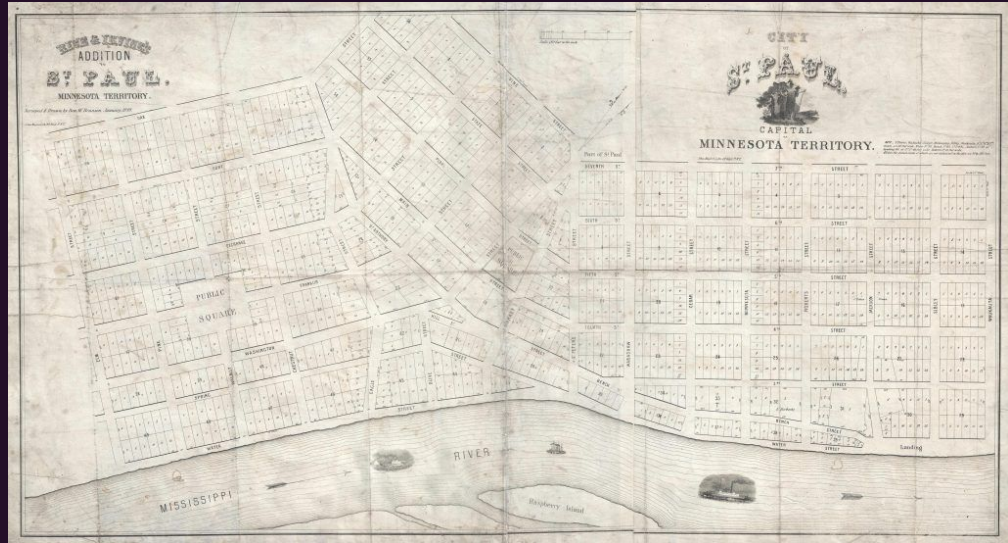
C. Justus Ramsey House



D. Olaf Lee House

6. In 1849, Saint Paul was confirmed as the capital of the Territory of Minnesota. Two parks were gifted to the City and shown in the first plats (plans) of Saint Paul that year. Identify these two parks from the list of parks below:

- Mears Park
- Irvine Park
- Cherokee Park
- Como Park
- Rice Park
- Phalen Park



First Printed map of Saint Paul 1849

7. What movie about an underdog hockey team features scenes in Rice Park, Mall of America and Mickey's diner?

- A. Youngblood (1986, starring Rob Lowe)
- B. Miracle (2004, starring Kurt Russell)
- C. The Mighty Ducks (1994, starring Emilio Estevez)
- D. Slap Shot (1977, starring Paul Newman)



8. What is the square footage of Mickey's Diner in downtown St. Paul?

Hint: Calculate by multiplying length by width.



9. Which famous gangster, having robbed 2 dozen banks, was named #1 Public Enemy in 1934, the same year he escaped a shootout at the Lexington Apartments, on Lexington Avenue near Grand?

- A. John Dillinger
- B. Al Capone
- C. Alvin “Creepy” Karpis
- D. Fred Barker



Check your answers

Let's see how
you did...

1. St. Paul is located within the traditional homelands of **B) The Dakota**

Mni Sota (Minnesota) is centered as the birthplace for the Dakota, with Bdote (where the Mississippi and Minnesota rivers meet) and Bde Wakan (Spirit Lake, now also known as Lake Mille Lacs) highlighted in Dakota creation stories. The Bdote area consists of many areas of historic and contemporary Dakota significance, such as Taku Wakan Tipi (Carver's Cave), Mni Sni (Coldwater Spring), and Oheyawahi (Pilot Knob).

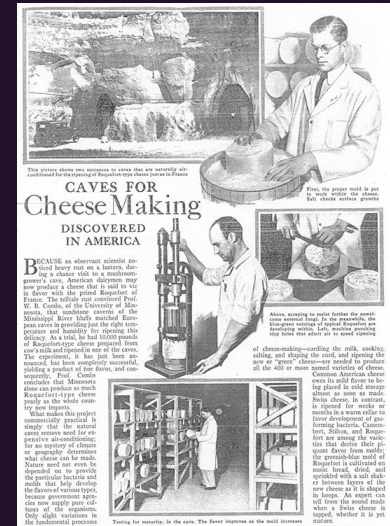
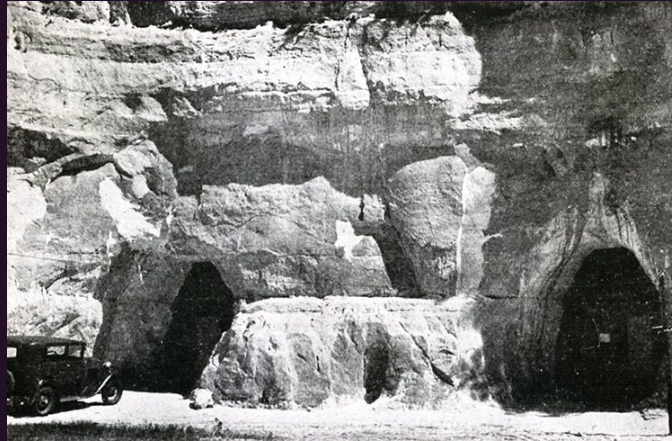


Contributed by Miles Rorvig

2. Items that were grown or aged in caves in Saint Paul include:

- Beer** (Stahlmann, Yoerg, North Star, Banholzer)
- Cheese** (Wabasha Street Caves was the Land O'Lakes Cheese Cave in the 1940s and 50s)
- Mushrooms** (Mushroom Valley was in the caves in the bluff along with West Side flats)

Bonus points: other food / drink items that can be verified....



Contributed by Lilli Boulware

3. How many state capitol buildings have there been?

Three! Work began on the current capitol building in 1896, its corner-stone laid July 27, 1898, and construction was completed in 1905. It is the third building to serve this purpose: the first capitol was destroyed by fire in 1881, and the second was completed in 1883, but was considered to be too small almost immediately.



4. “Quadridga”, the golden horses atop the state capitol holds much symbolism. Which of these is false?

B. The bag of apples in the chariot represent apple picking/agriculture



Contributed by Abigail Bollman

5. What is the oldest known home that is still standing in St. Paul?

C. The Justus Ramsey House

The 35-acre parcel including 252 West 7th Street was purchased by Henry Sibley, Henry Rice, and Justus Ramsey for \$60 in 1849.

The land was subdivided in 1850, and Justus Ramsey kept the title to the lot where this two-room house was built; it is believed that he initially lived in the home. It was constructed with 2-foot-thick light gray quarry-faced limestone walls, ashlar-coursed with lime mortar. In 1859, Ramsey lost or sold the home, after which it served as a barber shop and a residence. The house can still be seen from the patio of Burger Moe's.



Contributed by Miles Rorvig

6. In 1849, Saint Paul was confirmed as the capital of the Territory of Minnesota. Two parks were gifted to the City and shown in the first plats (plans) of Saint Paul that year. Identify these two parks from the list of parks below:

- Mears Park
- Irvine Park**
- Cherokee Park
- Como Park
- Rice Park**
- Phalen Park



MinnPost photo by Bill Lindeke



1908 Postcard

Contributed by Lilli Boulware

7. What movie about an underdog hockey team features scenes in Rice Park, Mall of America and Mickey's diner?

C The Mighty Ducks (1994, starring Emilio Estevez)



8. Mickey's Diner is just 500 square feet! (50ft long by 10ft wide)

Mickey's Diner has been in operation since 1939, and was listed on the National Register of Historic Places in 1983.

In addition to being featured in the *Mighty Duck's*, Mickey's appeared in *Jingle all The Way* (1996), and *A Prairie Home Companion* (2006).

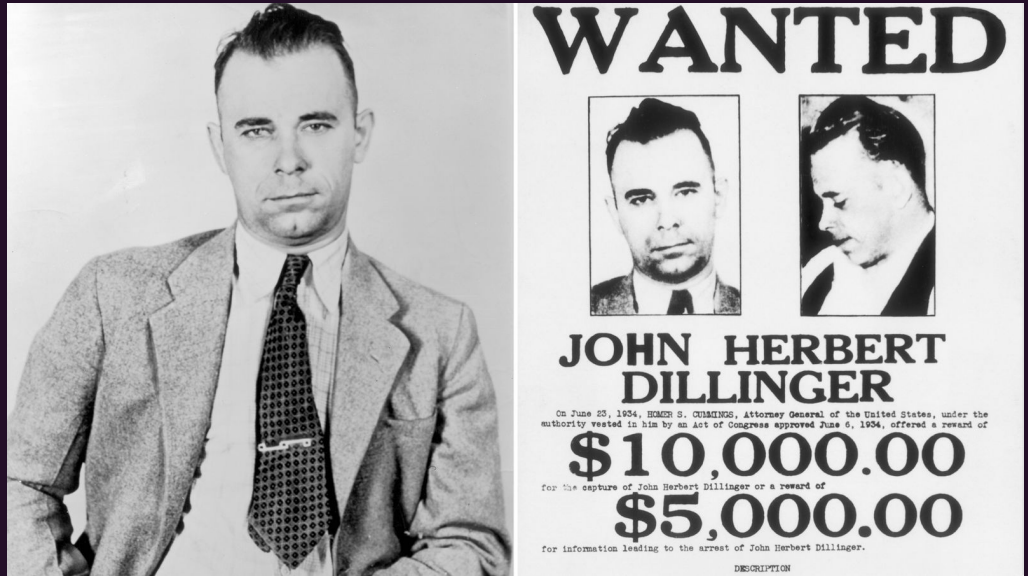
Contributed by Dmitry Baese



9. Which famous gangster, having robbed 2 dozen banks, was named #1 Public Enemy in 1934, the same year he escaped a shootout at the Lexington Apartments, on Lexington Avenue near Grand?

A. John Dillinger

Contributed by Trygve Pearce



1934 Wanted poster

Questions, comments?
& Intermission

Round 2

10. Around 1921, what public initiative in Saint Paul was one of the first in the country?

- A. School lunch programs
- B. Scouting
- C. School safety patrols
- D. Early Childhood Education classes

11. Which of these events has **NOT** been hosted in Saint Paul?

- A. Cat Video Festival
- B. World's 2nd Largest Pillow Fight
- C. America's Prolific Post-it Parade
- D. 8,000 person food fight



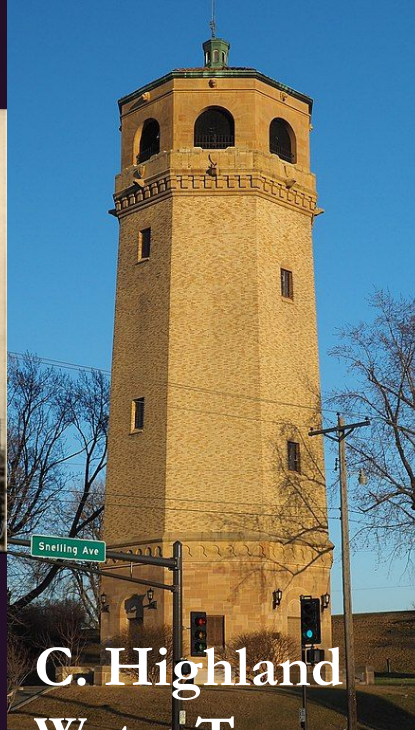
12. Downtown St. Paul is built on a thick shelf of stone that was quarried to build many of the city's first stone buildings -- such as the Coney Island and Assumption Church -- and can still be seen in many walls and foundations all over the city. What is the two word name of that stone?

Hint -- the name has something to do with Wisconsin.

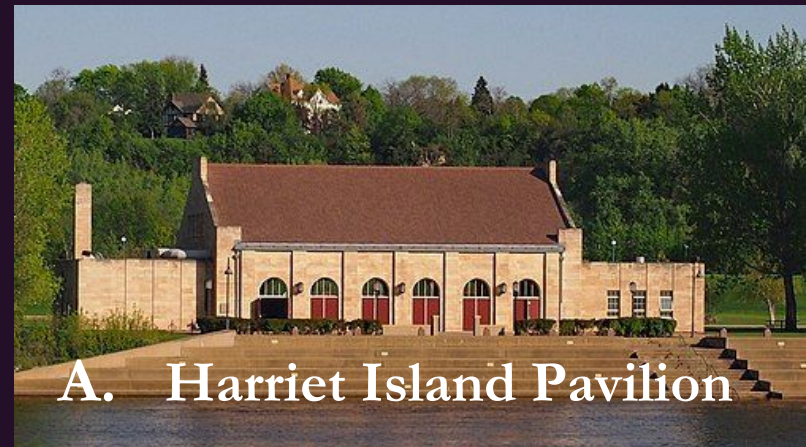
13. Architect Clarence “Cap” Wigington designed many notable buildings in St. Paul. Which of these was NOT one of his?



B. Central High School



C. Highland Water Tower



A. Harriet Island Pavilion



D. Holman Field Administration Bldg. (St. Paul Airport)

14. True or False: Crosby Farm Park was originally a farm.



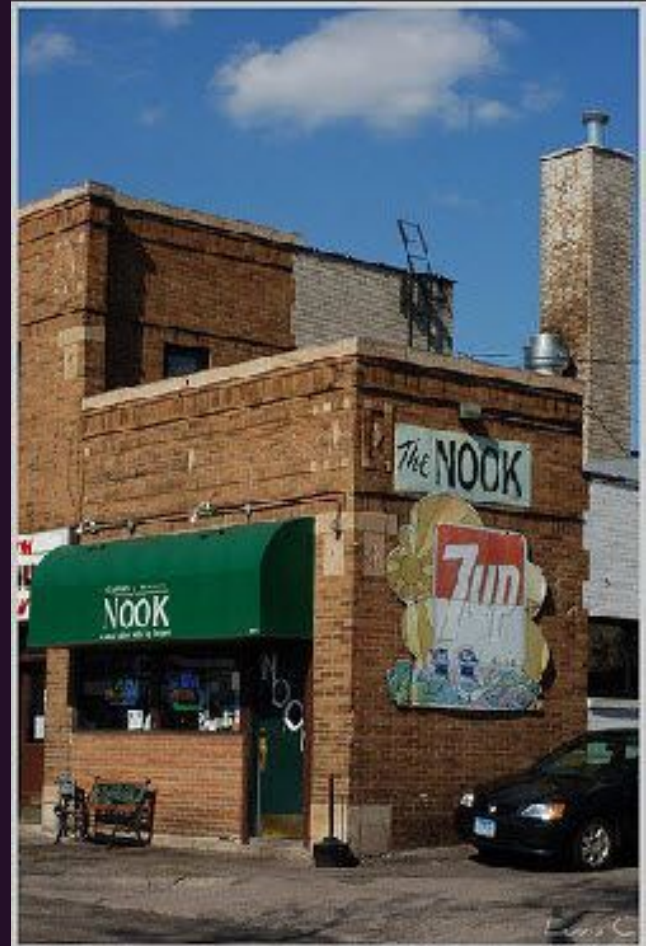
15. In what year was Saint Paul Public Schools founded?



Johnson High School 1960

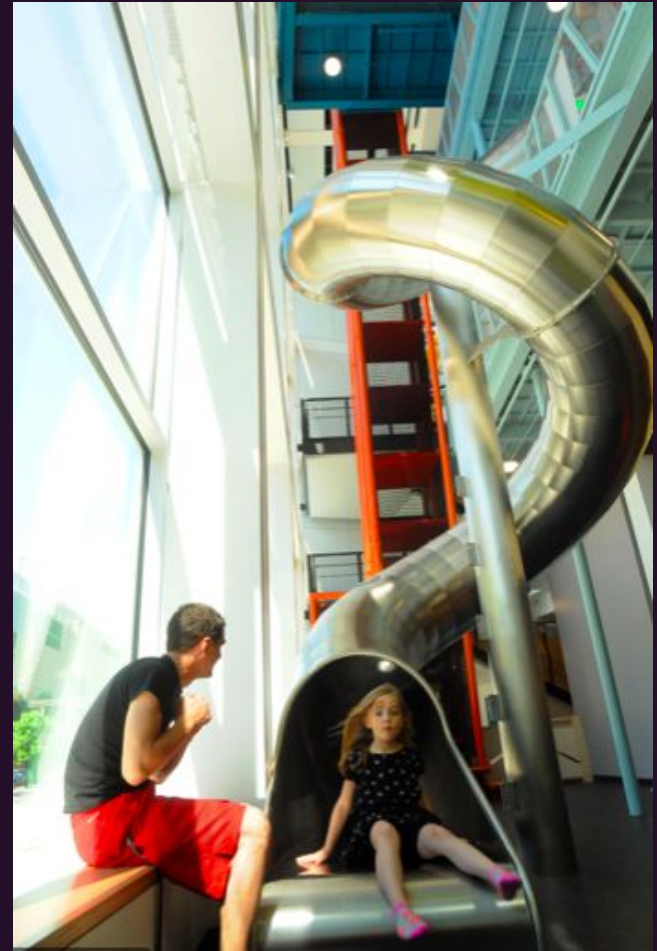
16. Approximately how much money in one dollar bills are plastered around the basement of The Nook?

- A. About \$800
- B. About \$1,700
- C. About \$7,400
- D. About \$16,000



17. Originally known as “Minnesota’s AwareHouse,” Minnesota Children’s Museum first opened in 1981 in Minneapolis. Since then, it’s had 3 sites in Saint Paul and is now host to how many visitors each year?

- A. 120,000 visitors**
- B. 80,000 visitors**
- C. 1,000,000 visitors**
- D. 550,000 visitors**



18. In 1932, Gladys Mittle, an art student at St. Kate's, won a contest with her design (current version shown here). What is it?

- A. Official Seal of the City of Saint Paul
- B. Official Seal of the Mayor of Saint Paul
- C. Official Flag of Saint Paul
- D. Stained glass window at Saint Paul City Hall



Bonus points:

- Name the two structures pictured
- Identify which key feature of this design was not original (added later)

19. What is the record for the longest snow ski jump ever made in Saint Paul?

- A. 74 feet
- B. 135 feet
- C. 197 feet
- D. 231 feet

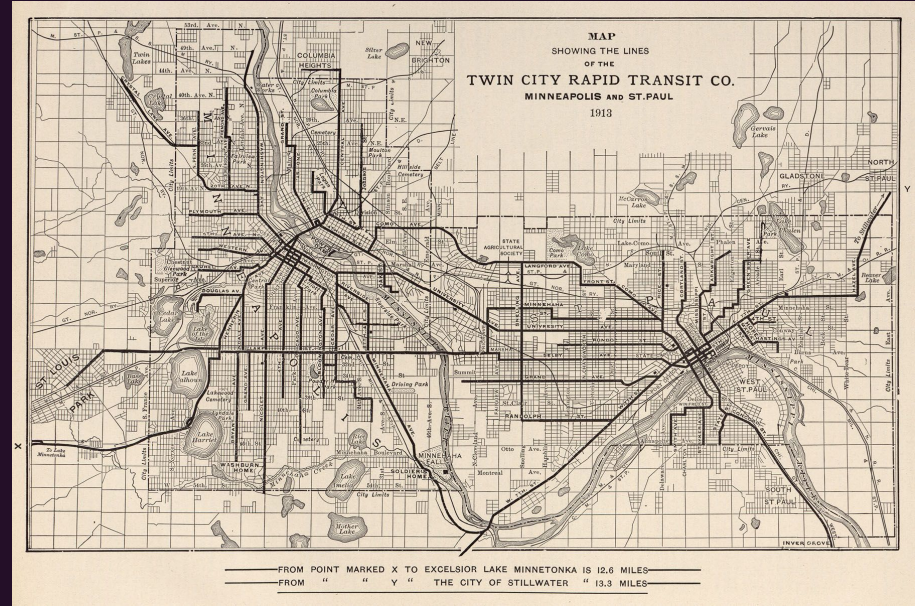


February 8, 1970 photo by Dave Norby

20. What Saint Paul street contained the first *electric* streetcar line?

- A. Selby Avenue
- B. 7th Street
- C. Wabasha Street
- D. Grand Avenue

Bonus points if you can name the 2nd street the electric line ran on.



21. What is the oldest building in downtown Saint Paul?

- A. Landmark Center
- B. Union Depot
- C. Coney Island
- D. Pioneer Endicott Building

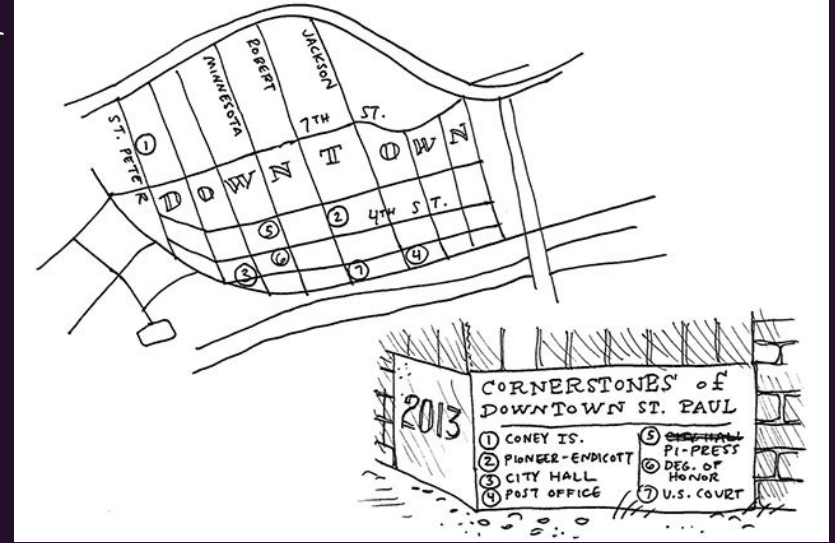


Diagram from MinnPost, "The Stroll" June 19, 2013

Check your answers

Let's see how
you did...

10. Around 1921, what public initiative in Saint Paul was one of the first in the country? **C - School safety patrols**

St. Paul's school safety patrol was first implemented in 1921. At the time, governments had not yet developed reliable systems to keep pedestrians safe and drivers also did not have adequate training to keep safe on the road because the state did not require drivers to be licensed.

Parents, principals, and politicians in the city were at the forefront of its development. However credit is due to City Council member and Safety Commissioner Aloysius Smith, who designed a training program for "school police" and Sister Carmela Hanggi, principal of the Cathedral School, who was an early proponent and a key developer of it.

A plaque on the flagpole across from the Cathedral of Saint Paul marks the site of the first guided school crossing.



The safety patrol at work, 1930
*Courtesy of
Minnesota
Historical Society*



Students from Saint Mark's Catholic School patrol march in the St. Paul School Patrol 95th Anniversary Parade, 2016 chanting: "Be alert! Safety first!"

*Photo credit to STar
Tribune*

11. Which of these events has NOT been hosted in Saint Paul?

C. America's Prolific Post-it Parade

CHS Field's main function may be baseball, but there's plenty of wacky fun to be had when the bases clear. The official home of the St. Paul Saints has also put on a variety of interesting non-baseball events, from the annual Cat Video Festival to the world's 2nd-largest pillow fight and yes even an 8,000 person food fight.

Source: www.visitsaintpaul.com



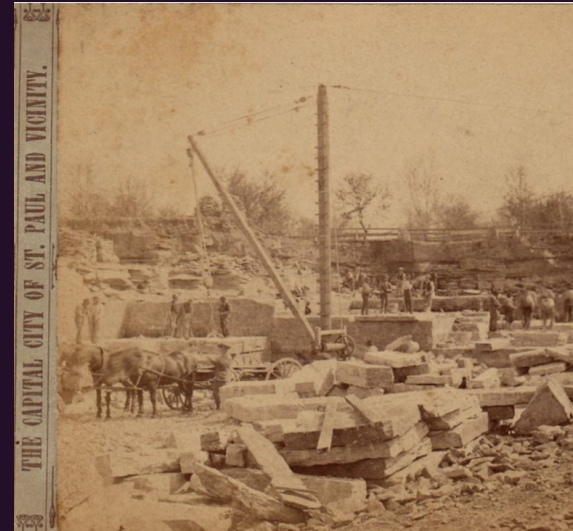
12. Downtown St. Paul is built on a thick shelf of stone that was quarried to build many of the city's first stone buildings -- such as the Coney Island and Assumption Church -- and can still be seen in many walls and foundations all over the city. What is the two word name of that stone?

Platteville limestone



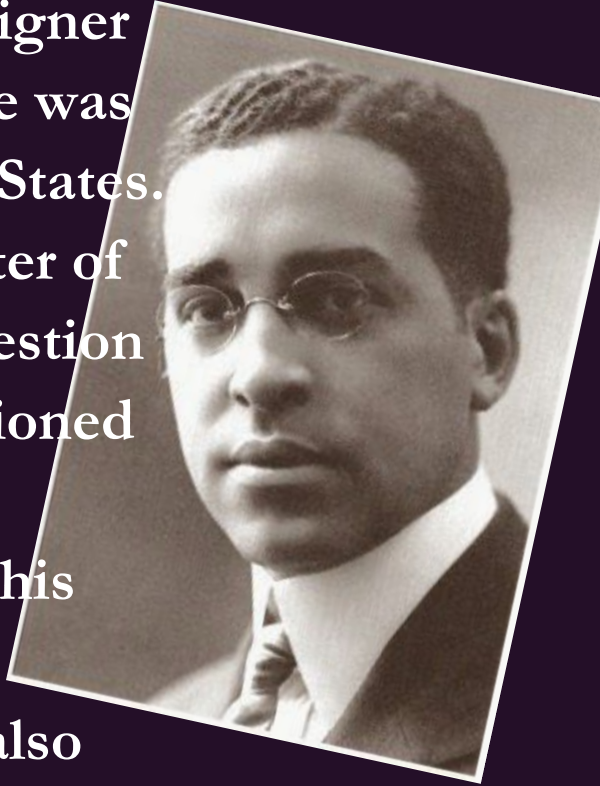
Photo by John Vichon, Library of Congress Collection

T.W Ingersoll Limestone Quarry, Saint Paul from T. Schroeder collection



13. **B. Central High School**

Clarence Wigington (1883-1967) was a senior designer in St. Paul's office of architecture for 34 years. He was the first Black municipal architect in the United States. Many of his buildings are on the National Register of Historic Places (including all 3 shown on the question slide). During World War I, he successfully petitioned Minnesota's governor to create the all-black 16th Battalion of the state's Home Guard. He earned his nickname, "Cap," after being commissioned the battalion's captain. In addition to buildings He also designed 5 Winter Carnival Ice Palaces!





Thanks to Bill Lindeke for compiling these pics...

14. True! Crosby Farm Park was originally a farm... Thomas Crosby obtained the original 160 acre farm in 1858 and farmed it until his death in 1886. Crosby's farm was the largest and longest running farm in the West End/Highland park area. Cattle, dairy cows, horses, pigs, and chickens were raised on the farm, along with crops including potatoes and apples. The farm continued to be farmed by a succession of other families until the early 1960s, when it was obtained by the Saint Paul Port Authority and leased to the City of Saint Paul as a park.

The park contains 6.7 miles of paved trails, many of which run along the river's shoreline through wooded bottomlands. Crosby Farm Regional Park is connected to Fort Snelling State Park and other parks in the vicinity by an extensive trail system.



Photos courtesy of the Minnesota Historical Society



15. In what year was Saint Paul Public Schools founded?

In 1856, a small group of citizens decided that a school district must be established. The mindset was that if excellence is the goal, then “good schools would attract good settlers.” In 2007, our district proudly served more than 41,000 students.

When the Minnesota Territory was formed, the three existing “cities” were St. Paul, St. Anthony (present day Minneapolis), and Stillwater. The cities competed for the home of the three most important institutions. St. Paul became the capitol, St. Anthony gained the university (University of Minnesota), and Stillwater gained the prison.



Contributed by Trygve Pearce

16. Approximately how much money in one dollar bills are plastered around the basement of The Nook?

D. About \$16,000 !!!

According to co-owner Michael Runyon, when customers pin dollar bills to the ceiling it “says that you were here”. It’s a tradition that began a decade ago by a regular named Maggie who was moving overseas, so she would have at least a dollar when she returned. Customers have been adding to it since.



17. Originally known as “Minnesota’s AwareHouse,” Minnesota Children’s Museum first opened in 1981 in Minneapolis. Since then, it’s had 3 sites in Saint Paul and is now host to how many visitors each year?

- A. 120,000 visitors
- B. 80,000 visitors
- C. 1,000,000 visitors
- D. 550,000 visitors**



18. In 1932, Gladys Mittle won a citywide contest to design **C. The Official Flag of the City of Saint Paul.** The prize was \$150.

Bonus points

The two structures at the top of the crest are (left and right on current flag): Father Lucien Galtier's original St. Paul's Chapel, a log cabin from 1841 which became the city's namesake; the Minnesota State Capitol dome.

The element not included in Gladys Mittle's original design is the banner with the words "Saint Paul" (as seen above in this picture from 1932 of the original flag).



19. What is the record for the longest snow ski jump ever made in Saint Paul? **C. 197 feet**

The Battle Creek Ski Jump (1939-1974), was one of the largest in the world at the time it was built. The Saint Paul Ski Club used the jump to the 1970's. The Saint Paul Ski Club hosted the 1939 National Championship on this jump shortly after it was constructed. The hill record is 197 feet held by Tim Denisson in 1971.



1949 photo by Luke Soler

20. What Saint Paul street contained the first *electric* streetcar line?

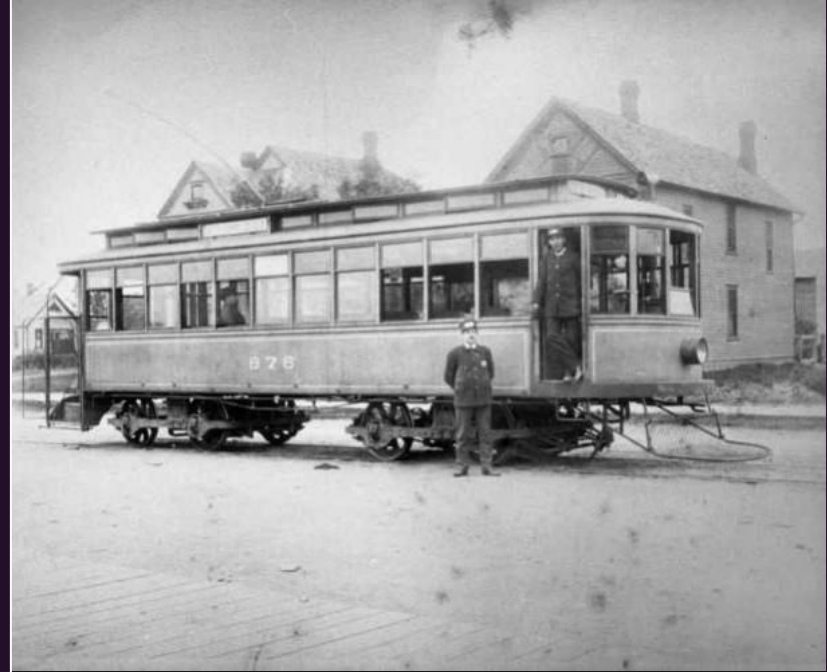
D. Grand Avenue

Bonus points:

The 2nd street the electric line ran on was Randolph Avenue.

Archbishop John Ireland encouraged Thomas Lowry to build the first electric lines in Saint Paul

[From Minnopedia]



Grand Avenue streetcar, c. 1910
Minnesota Historical Society

Contributed by Klein Kravis

21. What is the oldest commercial building in downtown Saint Paul?

C. Coney Island

The Original Coney Island Tavern was built in 1858. It served as the Minnesota State Arsenal for about 15 years in the late 1800's. In 1923 it became the Coney Island. It has not been open for regular business hours since 1994, but does open for special events.



Contributed by Klein Kravis

All done ~ congrats!

Thank you to our young contributors!!

Lilli Boulware

Klein Kravis

Miles Rorvig

Trygve Pearce

Dmitry Baese

Paul Nelson

You can help!

Please send your Trivia questions & ideas to:
info@historicsaintpaul.org

And, as always, we appreciate your financial support!
If you are able to contribute please visit:
www.historicsaintpaul.org and click **Donate!**

And thanks to you for joining us!